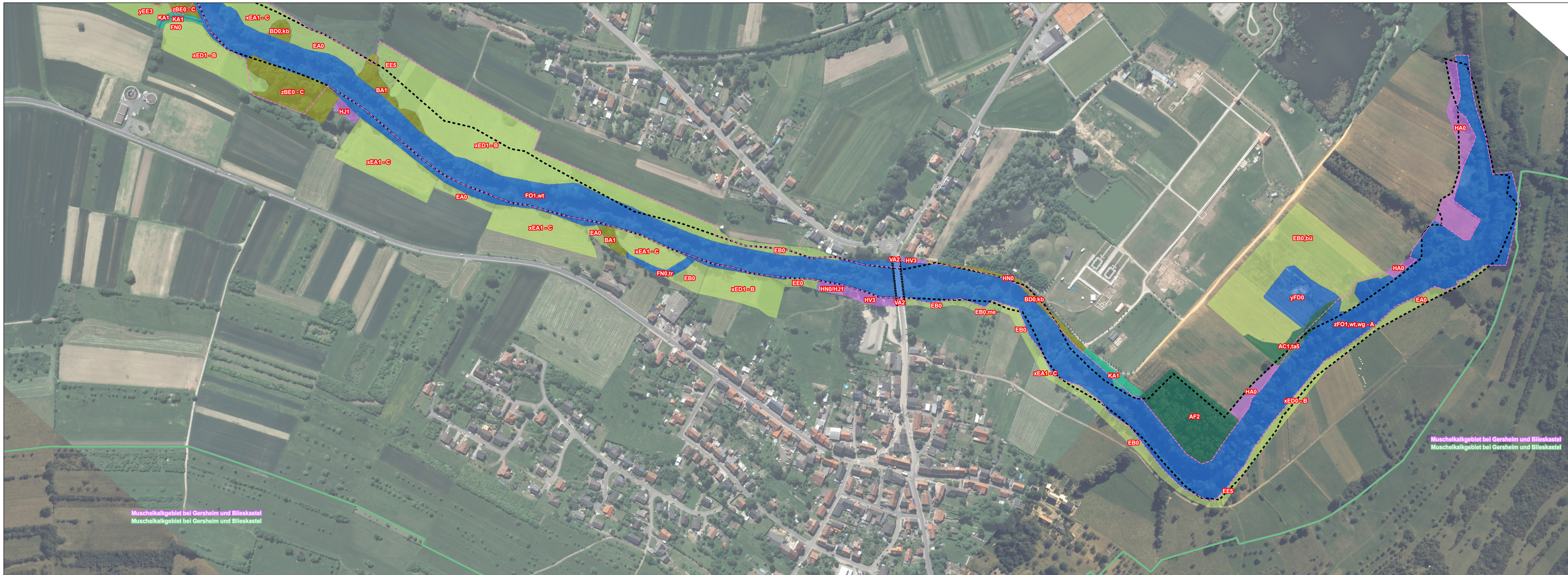
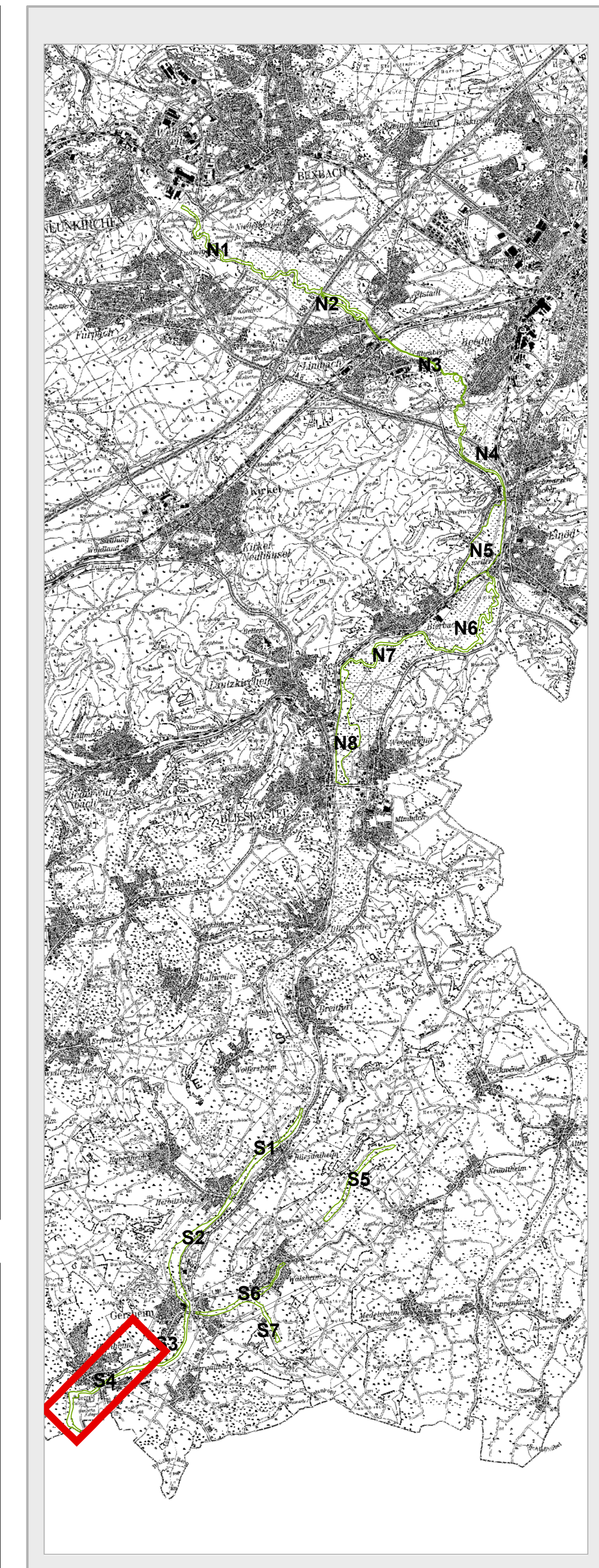


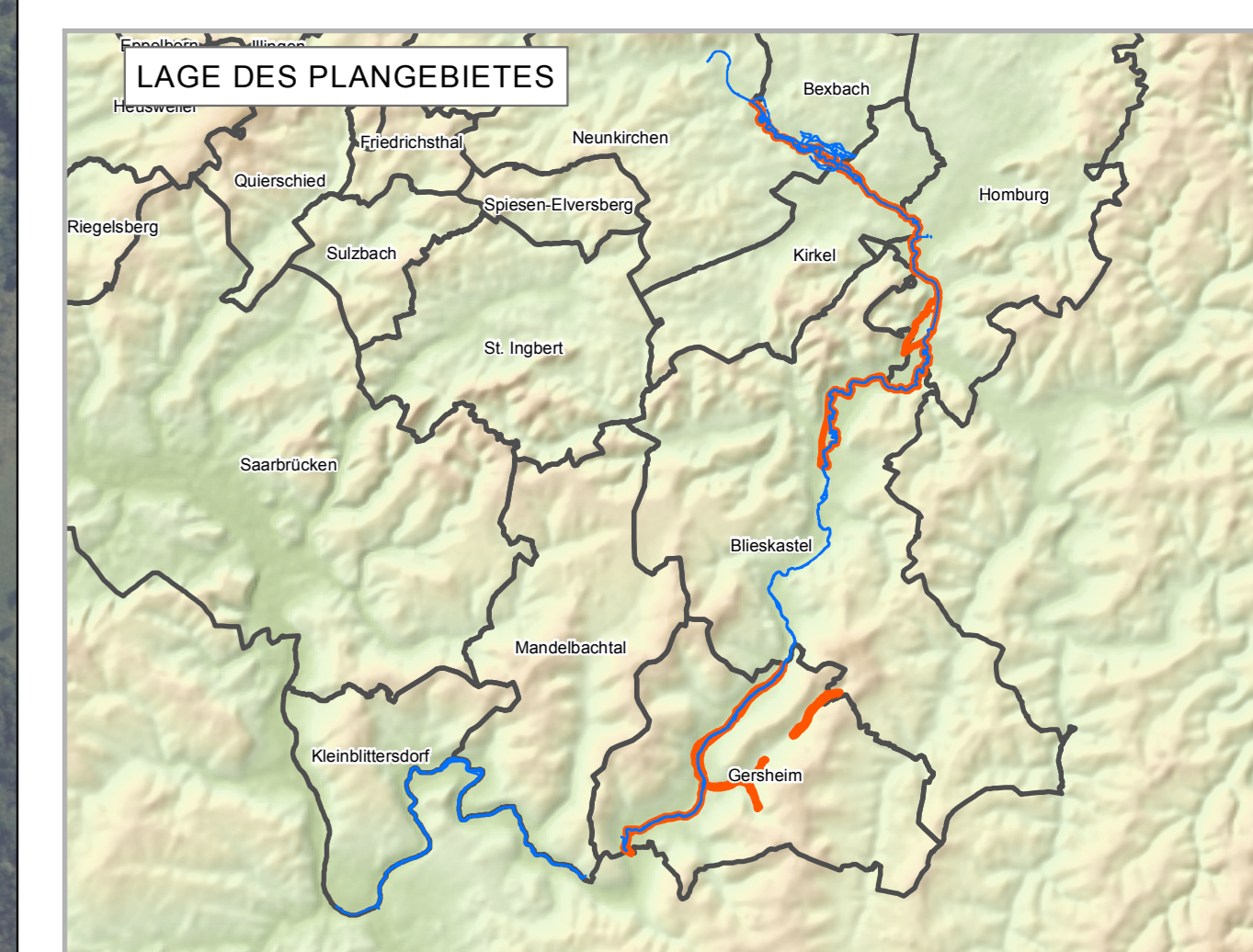
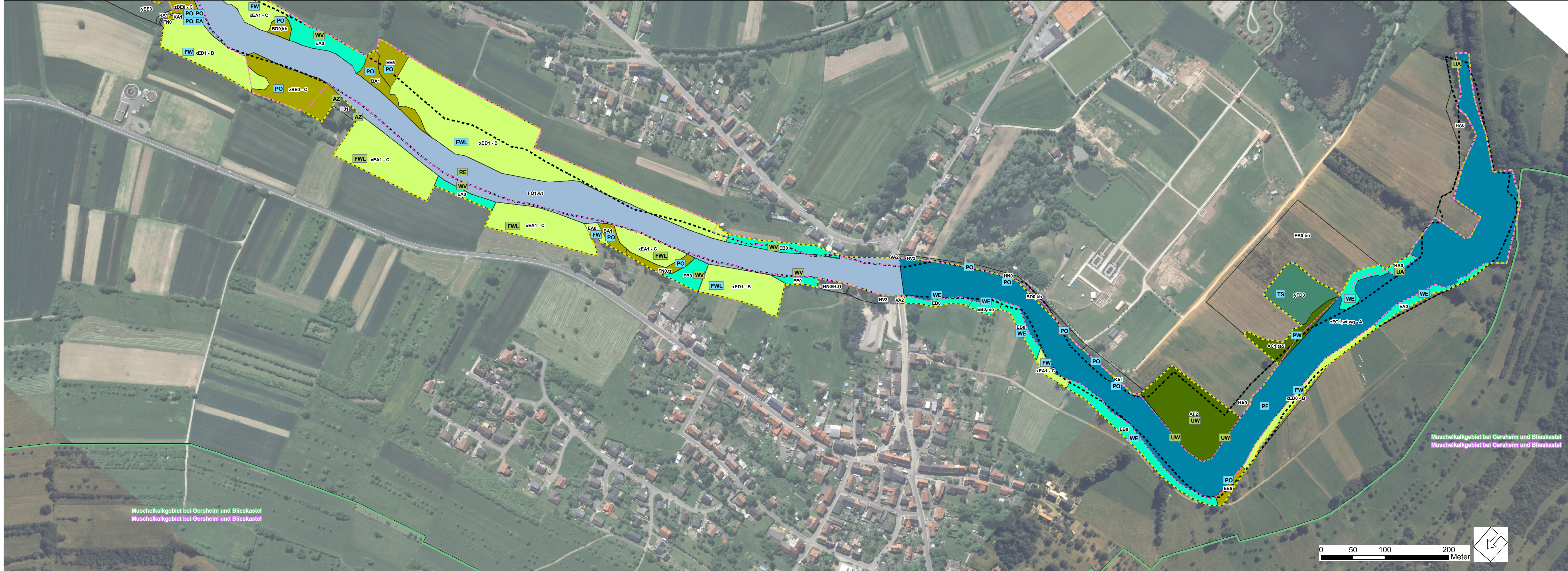
## Bestand Biotoptypen



## Lage Ausschnitt



## Maßnahmen



|                                     |   |  |
|-------------------------------------|---|--|
| MAßSTAB<br>1:2500                   | PROJEKTBEZEICHNUNG<br>ZFB-FFH-BLIES-11-040  | PLANGRÖSSE<br>120cm x 90cm                                     |
| BEARBEITUNGSSTAND<br>September 2012 | PROJEKTLEITER<br>Dipl. Geogr. M. Habermeyer | BEARBEITUNG<br>Dipl. Geogr. E. Moschel<br>Dipl. Geogr. A. Groß |

FFH - Managementplan  
"Blies"  
- Bestand Biotoptypen -